



## Holmdene Avenue

£1,099,950

NEW - STUNNING FOUR BEDROOM SEMI DETACHED HOUSE - POPULAR LOCATION CLOSE TO MILL HILL BROADWAY- Cosway Estates are delighted to present a beautiful Four bedroom semi detached house in Holmdene Avenue. Located just moments from Mill Hill Broadway, Mill Hill Park and the various transport links that The Broadway offers, it is an ideal location for a substantial family home. Chain Free Viewings advised

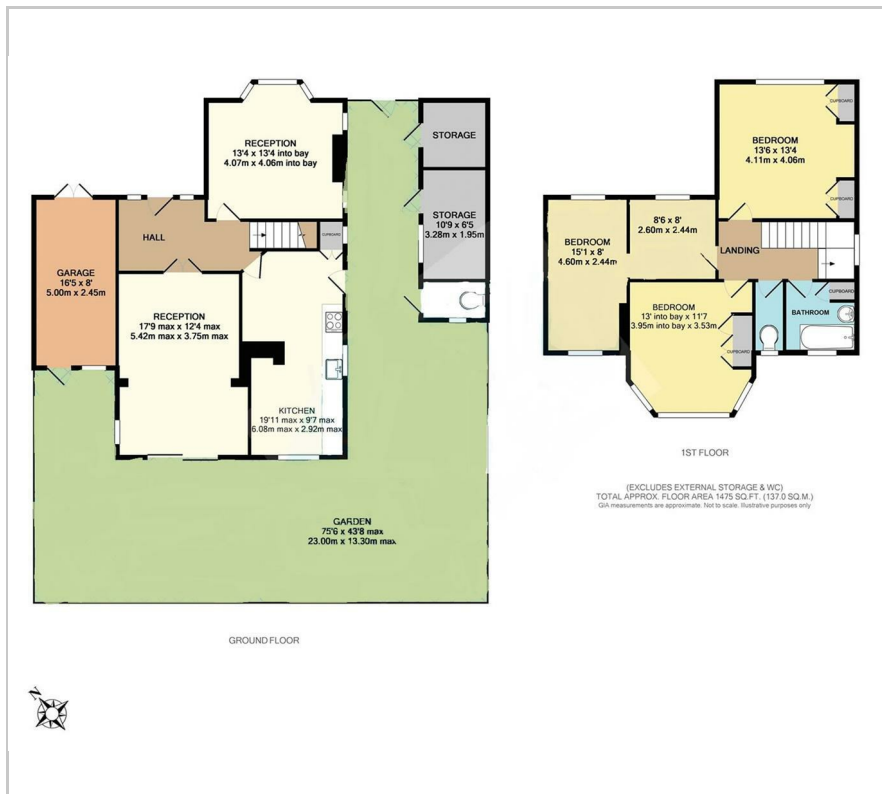
■ 3444-Probate valuation £695,000 2/5/12

### Viewing

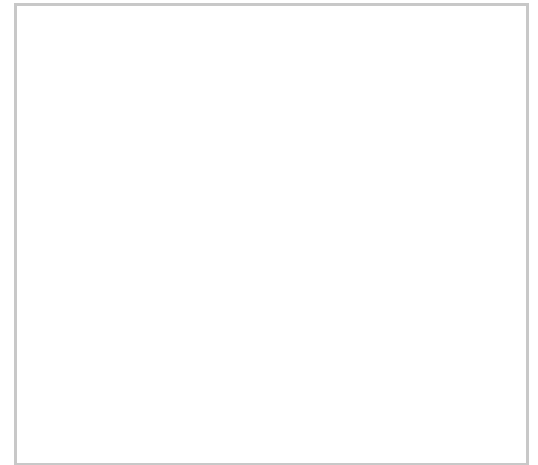
Please contact our London Office on 020 8959 0011 if you wish to arrange a viewing appointment for this property or require further information.



## Floor Plan



## Area Map



## Energy Efficiency Graph



These particulars, whilst believed to be accurate are set out as a general outline only for guidance and do not constitute any part of an offer or contract. Intending purchasers should not rely on them as statements of representation of fact, but must satisfy themselves by inspection or otherwise as to their accuracy. No person in this firm's employment has the authority to make or give any representation or warranty in respect of the property.